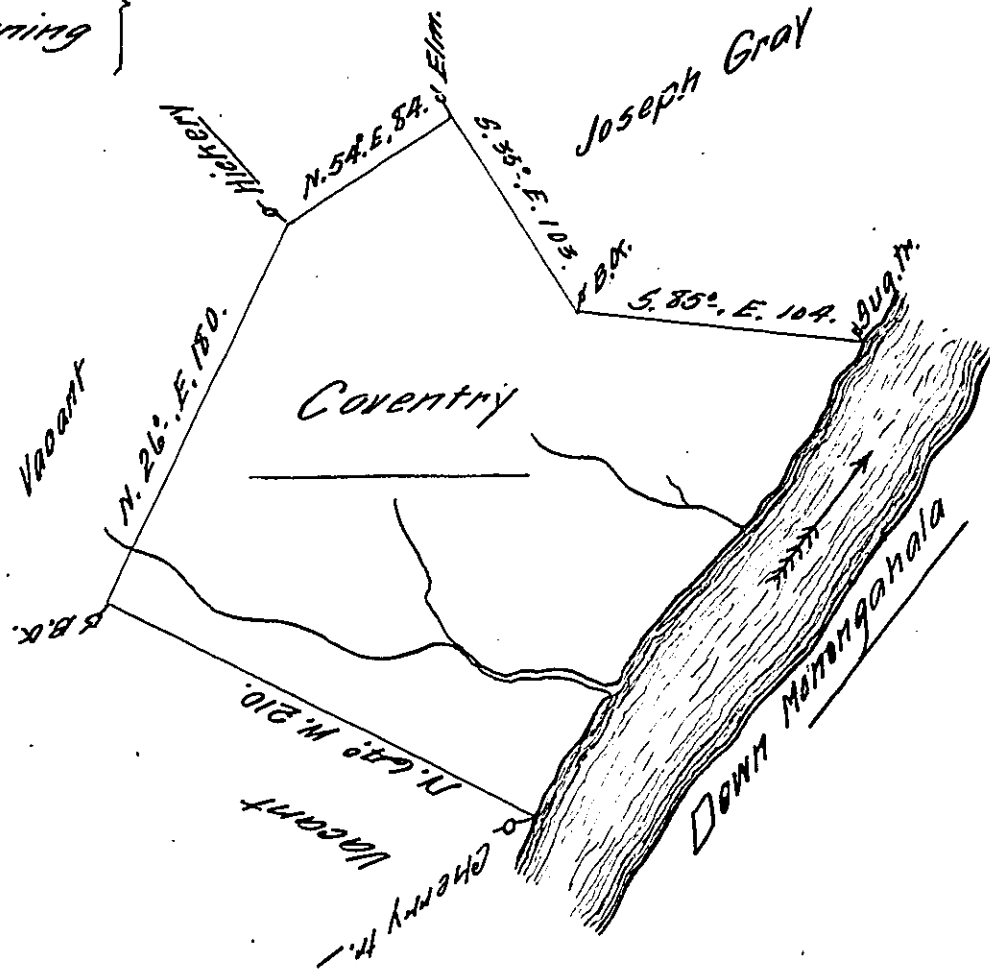


Courses up Monongahala }  
 Beg. at a Sug. & Flumming }  
 S. 32°. W. 114 P. }  
 S. 37. W. 86 P. }  
 S. 29. W. 60 P. }  
 to a Cherry tree }  
 ----- }  
 260.



In pursuance of an order No 1719, dated 3<sup>d</sup> April 1769  
 the above is a draught of a tract of land called  
 Coventry situate on the West side Monongahala  
 containing 313 acres with the usual allowance of 6  
 p Ct. for Roads, Highways, &c. Survey'd for Henry  
 Wood 27<sup>th</sup> September 1769.

by James Hendricks.

To John Lukens Esq:  
 Surveyor General

IN TESTIMONY that the above is a copy of the original remaining on file in  
 the Department of Internal Affairs of Pennsylvania, made  
 conformably to an Act of Assembly approved the 16th day of  
 February, 1833, I have hereunto set my Hand and caused  
 the Seal of said Department to be affixed at Harrisburg,  
 this fifth day of April 1911.

*Henry Howell*  
 Secretary of Internal Affairs.